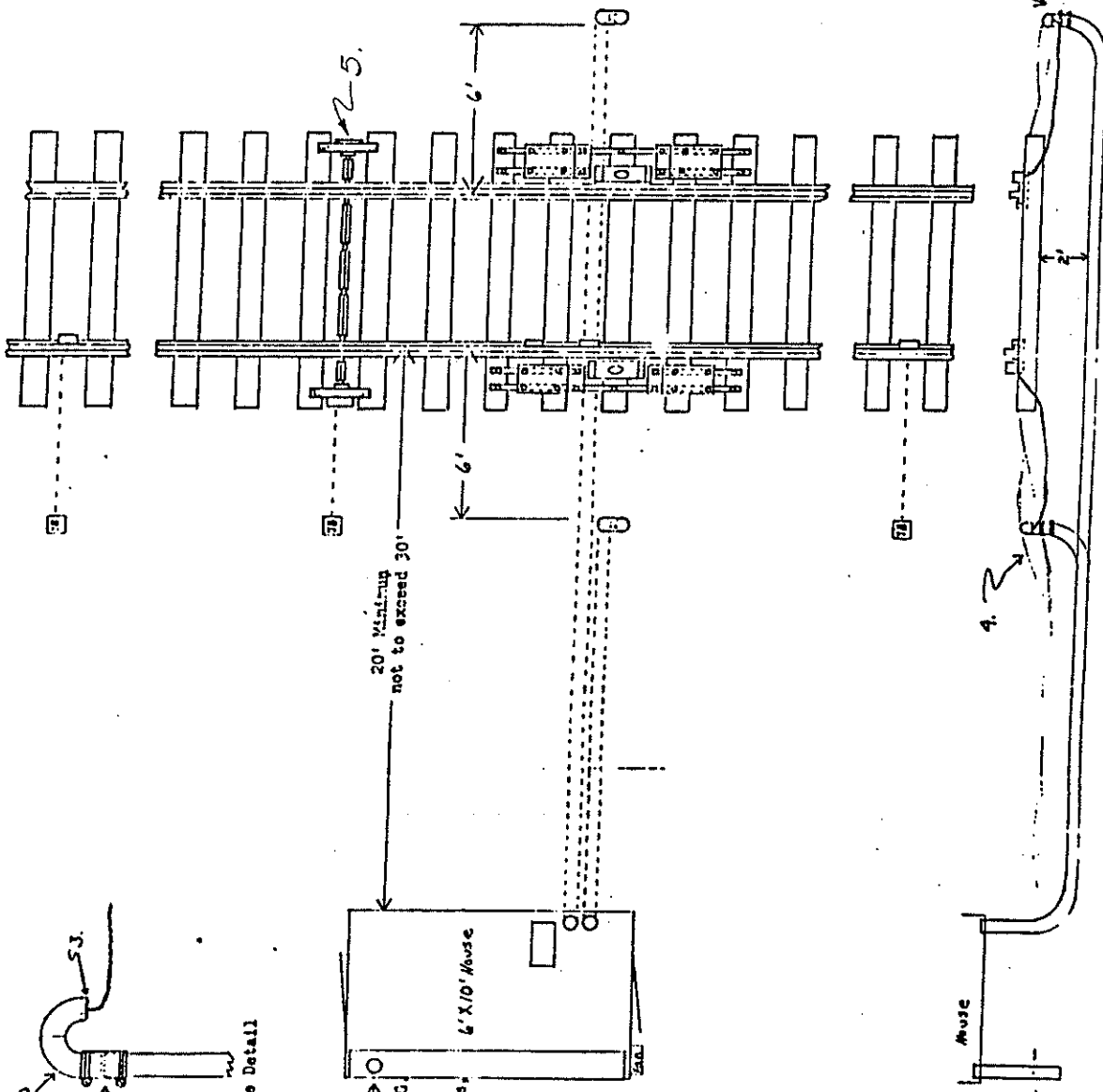
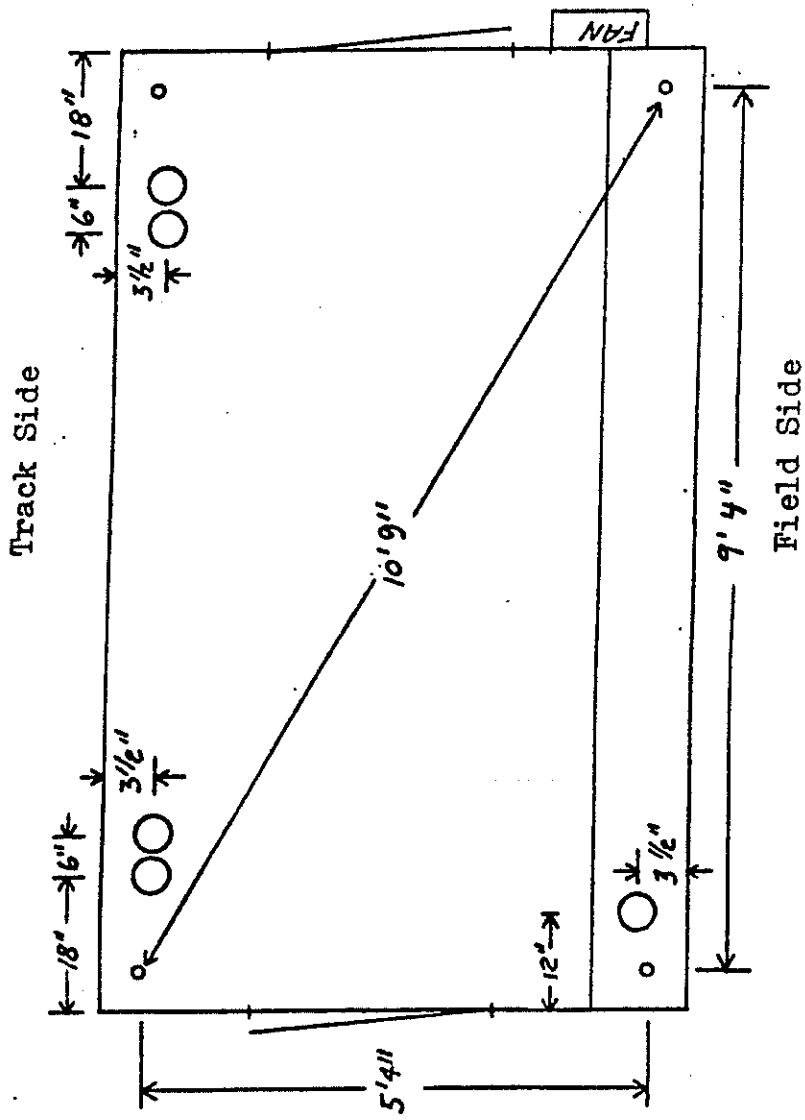


1. Use neopren compression fitting for 4" PVC pipe E-156-44.
2. Use two street elbow 4"-90 degree.
3. Reducing bushing 4" x 2".
4. Cover end of pipe with mound of ballast with top of pipe not over 5" above grade line.
5. See C-272



Pipe Layout Plan
 For Single Track
 Hot Box Detector
 ACE-S 3-11-87

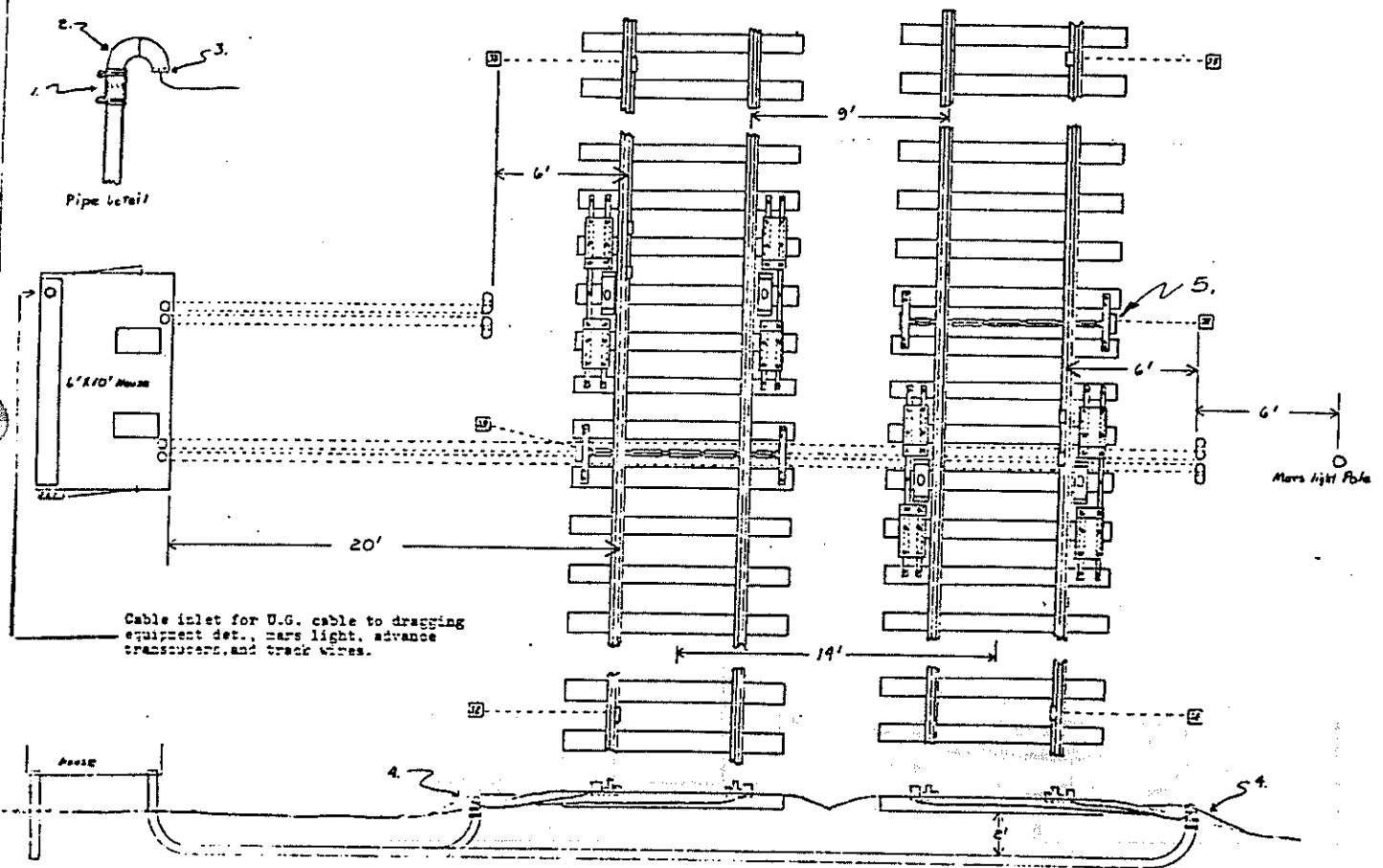
**PIPE LAYOUT PLAN FOR
 HOT BOX DETECTOR**
 ACE-S 3-11-87 M-400
 Rev. 7-24-87



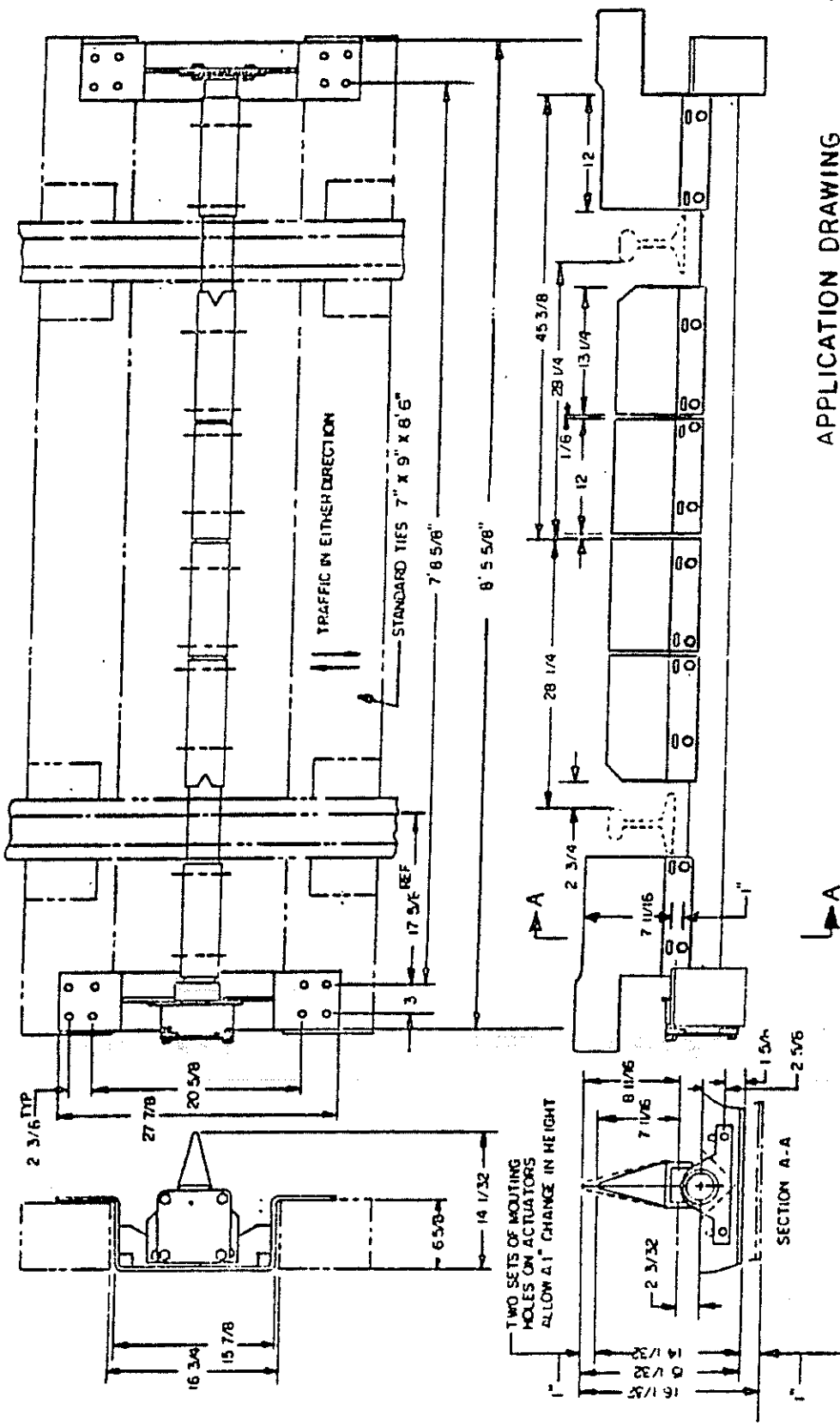
Note: All measurements for U.G. pipe are from inside of house. Add 2 1/2" for thickness of insulation.

6'X10' HOT BOX HOUSE
ACE-S 9-15-86 M-401

1. Use neoprene compression fitting for 4" PVC pipe PN 150-44.
2. Use two street elbow 4"-90 degree.
3. Reducing bushing 4" I 2".
4. Cover end of pipe with mound of ballast with top of pipe not over 6" above grade line.
5. See C-272



Pipe Layout Plan
 For Double Track
 Hot Box Detector
 ACE-S 1-74-87 M-401
 Rev. 7-24-87



APPLICATION DRAWING
 FOR DRAGGING EQUIPMENT DETECTOR
 ACE-S 7-22-87

TWO SETS OF MOUNTING HOLES ON ACTUATORS ALLOW ±1" CHANGE IN HEIGHT

TWO SETS OF MOUNTING HOLES ON THE VERTICAL PANEL OF END BRACKETS ALLOW A 1" CHANGE IN HEIGHT