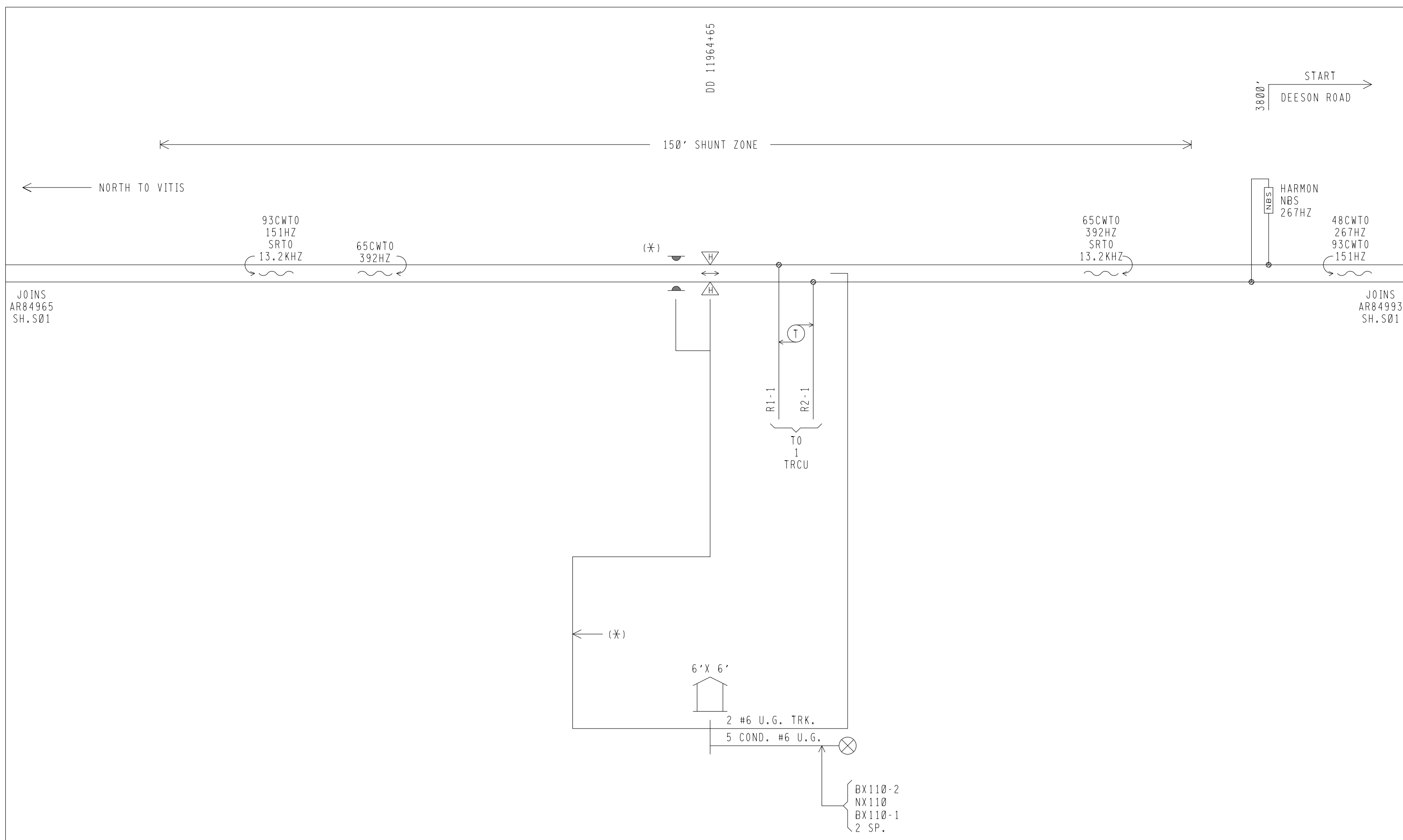


REVISIONS

10-26-00 IRS FL1997103
 08-02-07 IRS FL2007080



NOTE.

(*)= SEE TRACKSIDE EQUIPMENT LAYOUT SHEET FOR CABLE TYPE & SIZE AND DETAILED TRACK LAYOUT. FOR CIRCUITS SEE FILES AR84970 SH. G01-G08



RAIL TRANSPORT GROUP ENGINEERING COMMUNICATIONS AND SIGNALS

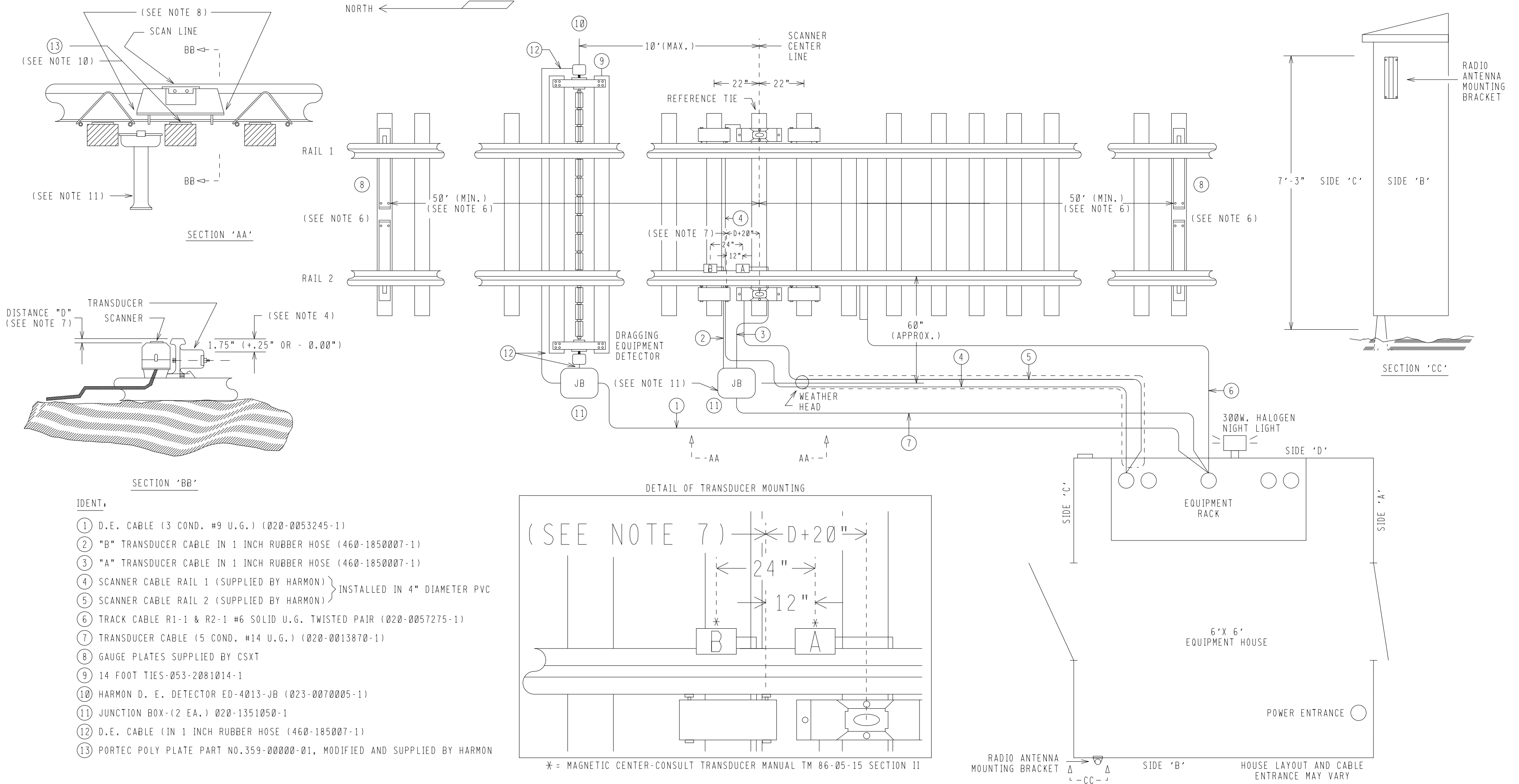
VITIS TO LAKELAND
 STOKES, FL
 TRACK AND SIGNAL PLAN AT
 DEFECT DETECTOR, MP. AR-849.70

DESIGNED HAR/JFW	DIGITIZED HAR/JFW	CHECKED HAR/MJH	DATE 02-26-98
---------------------	----------------------	--------------------	------------------

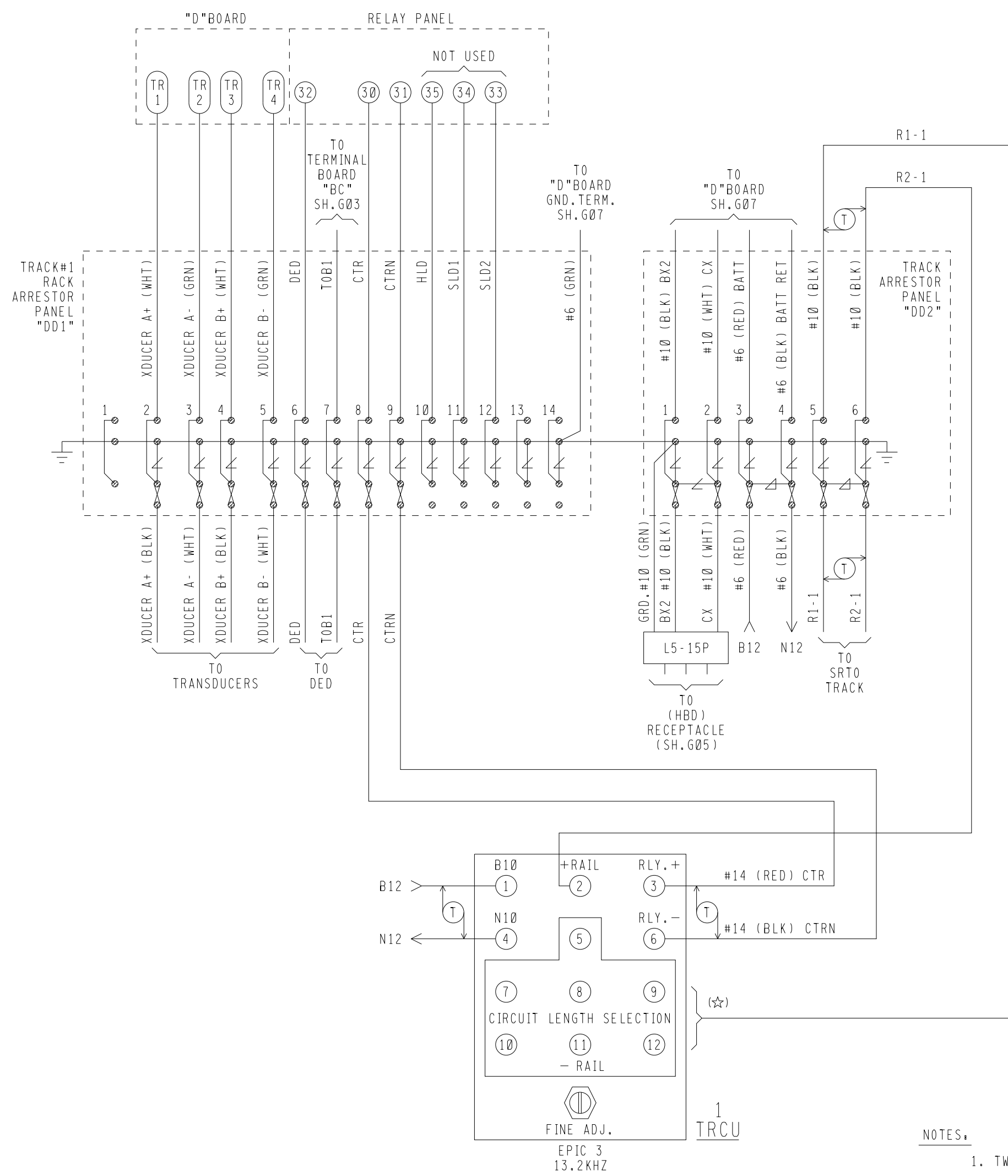
DRAWING E-8100	SHEET NO 436AA	NEXT SH 436AA-1	NEXT FILE AR84970	NEXT SH G01	FILE AR84970	SHEET S01
--------------------------	--------------------------	--------------------	----------------------	----------------	-----------------	--------------

WARNING:

DETECTOR BUNGALOW MAY BE INSTALLED EITHER SIDE OF TRACKS, HOWEVER, RAIL #1 MUST ALWAYS BE THE "EAST" RAIL. MOUNT TRANSDUCERS ON HOUSE SIDE.



REVISIONS				 RAIL TRANSPORT GROUP ENGINEERING COMMUNICATIONS AND SIGNALS			
10-26-00 IRS FL1997103				VITIS TO LAKELAND STOKES, FL TRACKSIDE EQUIPMENT LAYOUT AT DEFECT DETECTOR, MP.AR-849.70			
DESIGNED HAR/JFW	DIGITIZED HAR/JFW	CHECKED HAR/MJH	DATE 02-26-98				
DRAWING E-8100	SHEET NO 436AA-1	NEXT SH 436AA-2	NEXT FILE AR84970	NEXT SH G02	FILE AR84970	SHEET G01	

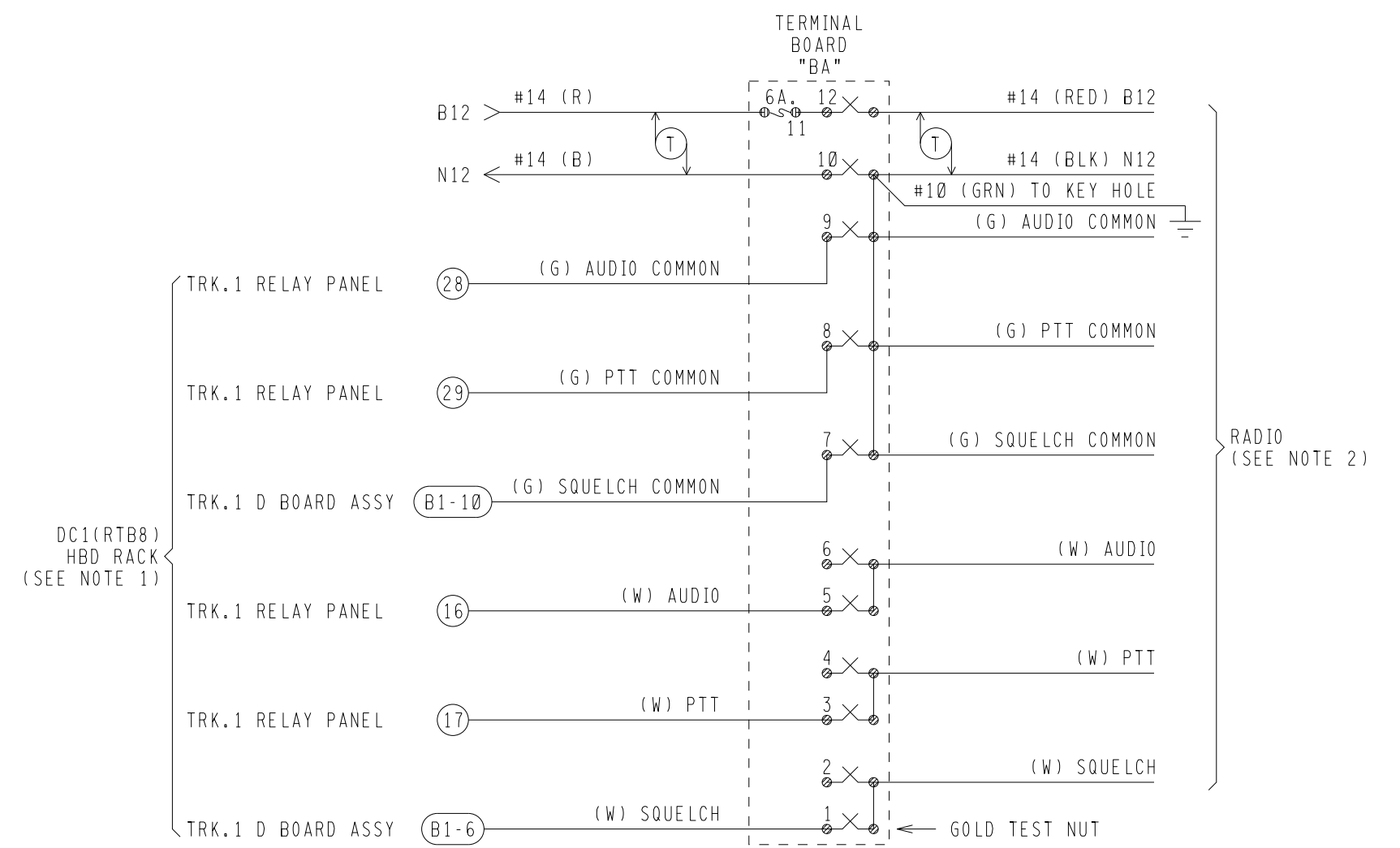
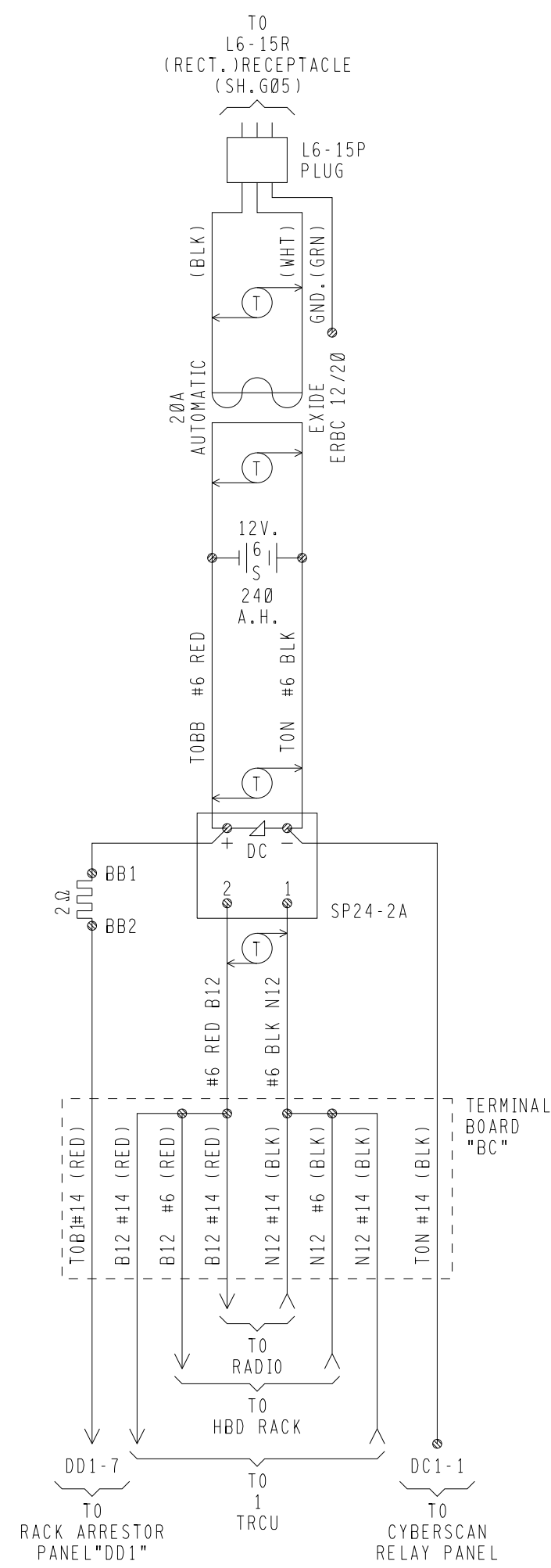


(☆) = (- RAIL) FIELD SELECT PER ADJUSTMENT PROCEDURE TO SET SHUNT ZONE OF 150'

NOTES:

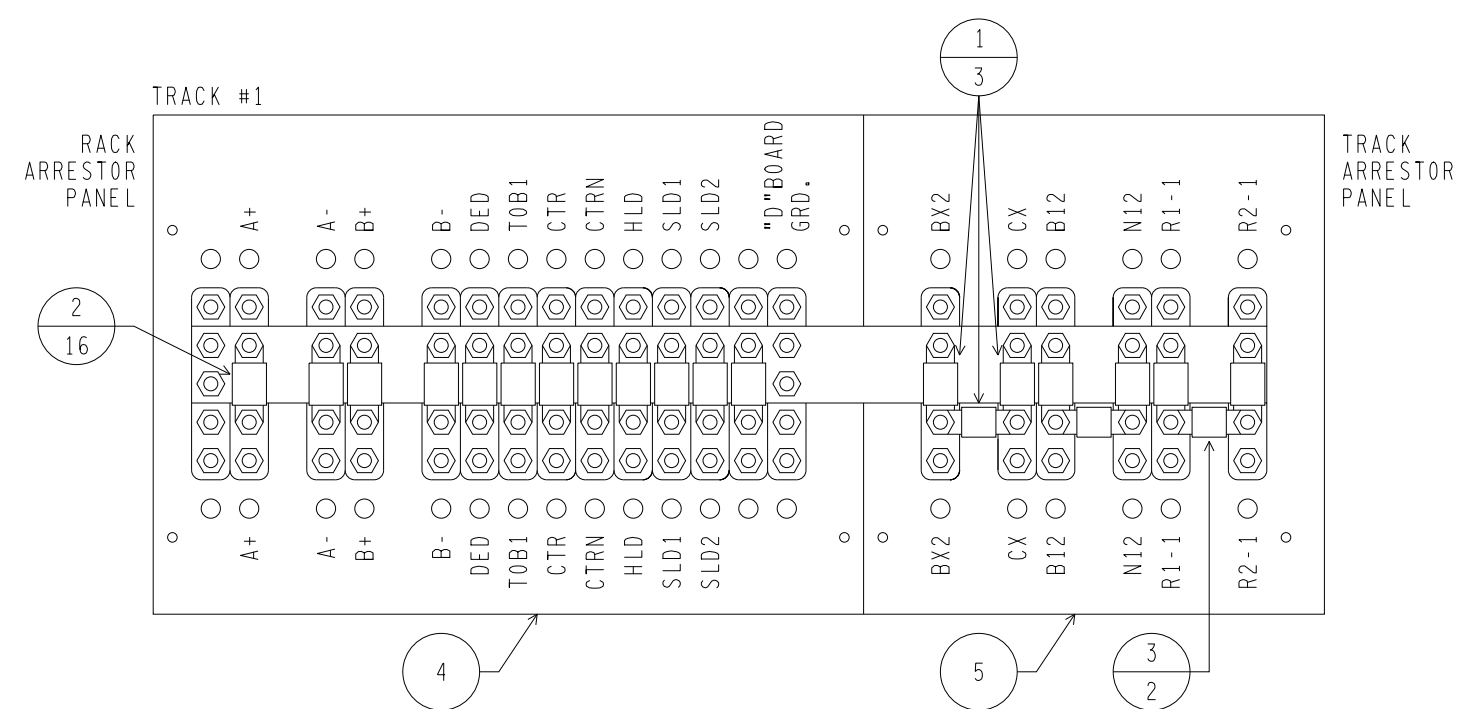
1. TWIST ALL PAIRED WIRES
- = INDICATES A CONNECTION ON THE RELAY PANEL ASSEMBLY ON SH.G06.
- = INDICATES A CONNECTION ON THE "D" BOARD ASSEMBLY ON SH.G07.

REVISIONS			 RAIL TRANSPORT GROUP ENGINEERING COMMUNICATIONS AND SIGNALS			
10-26-00 IRS FL1997103			VITIS TO LAKELAND STOKES, FL SURGE ARRESTOR WIRING AT DEFECT DETECTOR, MP.AR-849.70			
DESIGNED HAR/JFW	DIGITIZED HAR/JFW	CHECKED HAR/MJH				
DRAWING E-8100	SHEET NO 436AA-2	NEXT SH 436AA-3	NEXT FILE AR84970	NEXT SH G03	FILE AR84970	SHEET G02



- NOTES:
1. THESE WIRES WILL BE FOUND ATTACHED TO THE RELAY PANEL OF THE CYBERSCAN EQUIPMENT.
 2. ON RADIO SIDE OF TERMINAL BLOCK MAKE PIGTAIL WIRES (APPROX. 18" LONG) OUT OF THE EXCESS FROM WIRES CONNECTED TO RACK TERMINATE WITH #6 RED SPADE LUGS.
 3. TWIST ALL PAIRED WIRES (T) INDICATES PAIRED WIRES.
 4. DO NOT USE TYWRAPS ON WIRES IN WIRE CHASE.

REVISIONS			 RAIL TRANSPORT GROUP ENGINEERING COMMUNICATIONS AND SIGNALS			
10-26-00 IRS FL1997103			VITIS TO LAKE LAND STOKES, FL RADIO CONNECTIONS DEFECT DETECTOR, MP.AR-849.70			
DESIGNED HAR/JFW	DIGITIZED HAR/JFW	CHECKED HAR/MJH				
DRAWING E-8100	SHEET NO 436AA-3	NEXT SH 436AA-4	NEXT FILE AR84970	NEXT SH G04	FILE AR84970	SHEET G03



NOTES:

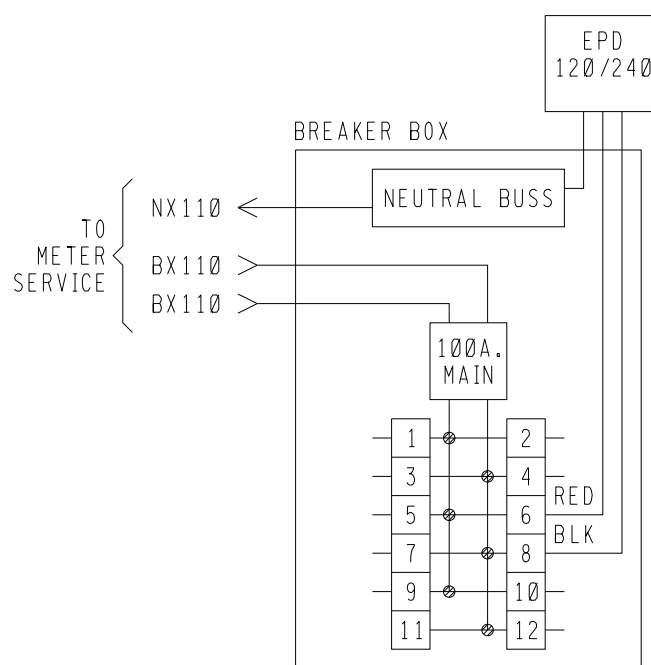
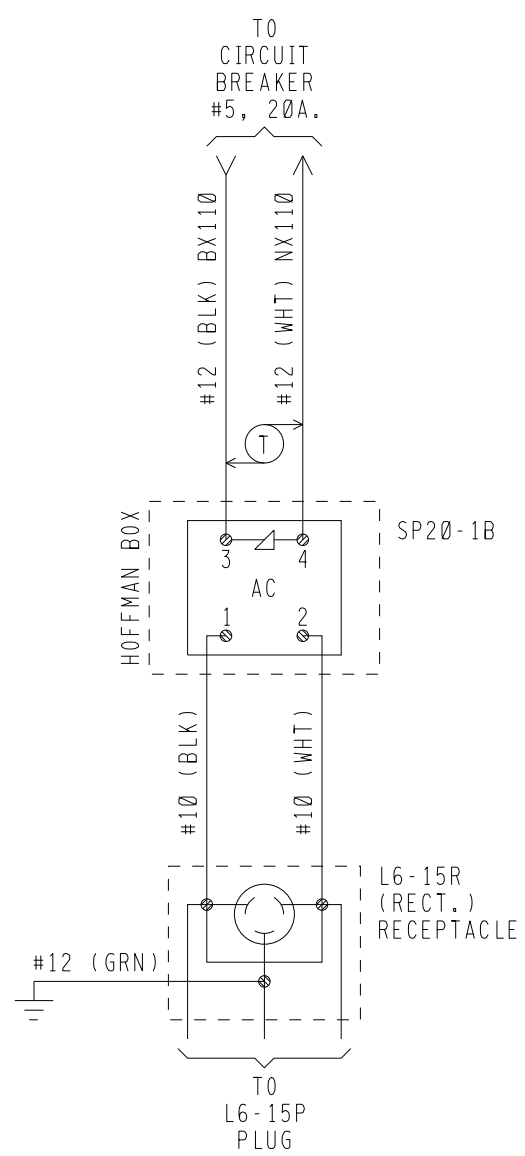
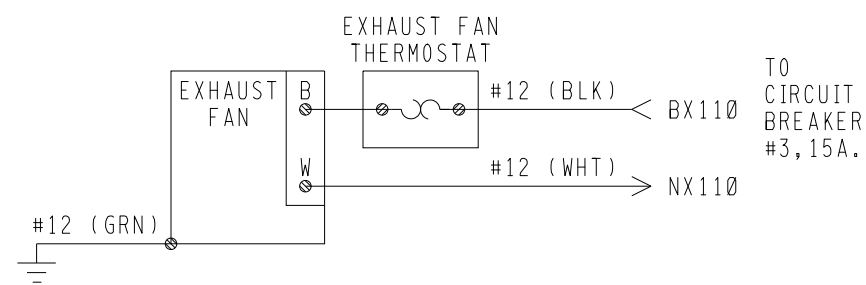
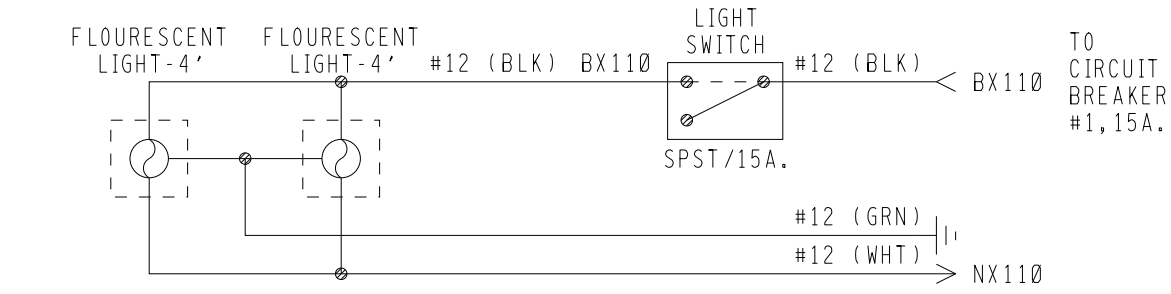
1. MAKE HOLE TAGS FOR TOP AND BOTTOM HOLES ON SURGE ARRESTOR PANELS.

2.

1	→	TYPE OF ARRESTOR
3	→	QUANTITY NEEDED

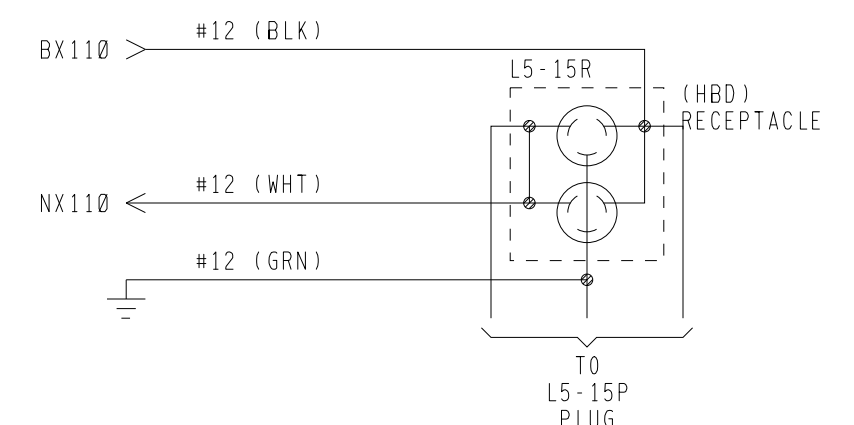
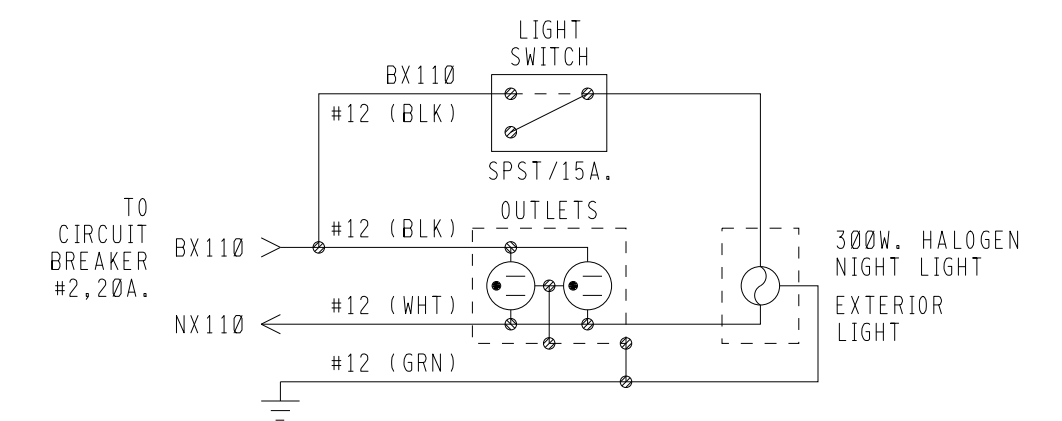
1	010006-002	ARRESTOR CLEARVIEW
2	202216-001	ASSY. AGA-1
3	202217-000	ASSY. AGE-1
4	202395-000	ASSY. ARREST. PANEL RACK
5	202395-001	ASSY. ARREST. PANEL TRACK

REVISIONS		RAIL TRANSPORT GROUP ENGINEERING COMMUNICATIONS AND SIGNALS			
10-26-00 IRS FL1997103		VITIS TO LAKELAND STOKES, FL TRACK ARRESTOR PANEL AT DEFECT DETECTOR, MP.AR-849.70			
DESIGNED HAR/JFW	DIGITIZED HAR/JFW	CHECKED HAR/MJH	DATE 02-26-98		
DRAWING E-8100	SHEET NO 436AA-4	NEXT SH 436AA-5	NEXT FILE AR84970	NEXT SH G05	FILE AR84970
				SHEET G04	

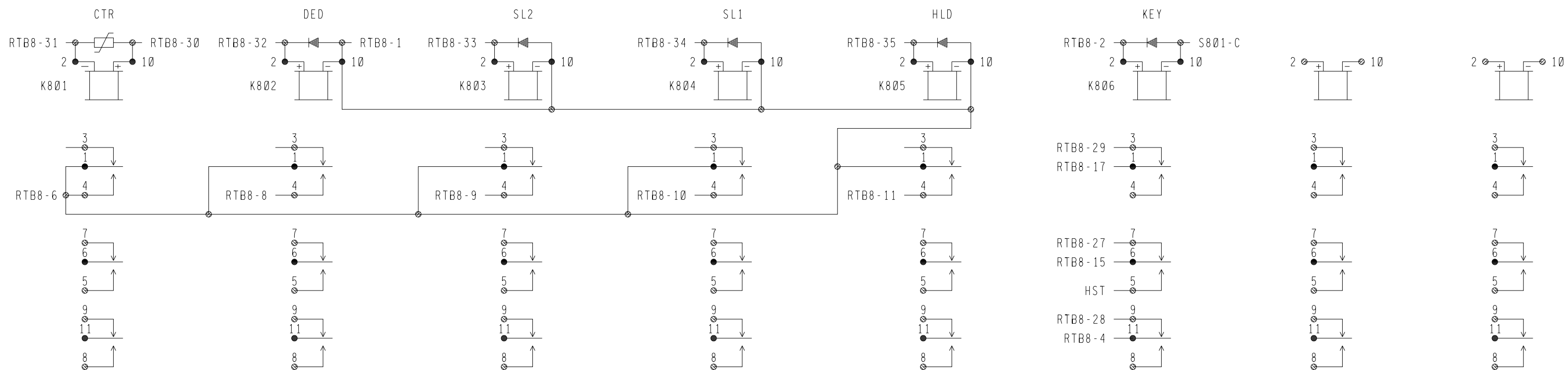


ARRANGEMENT OF BREAKERS

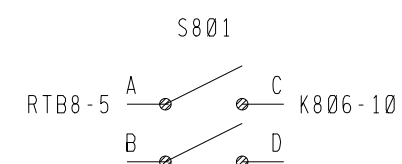
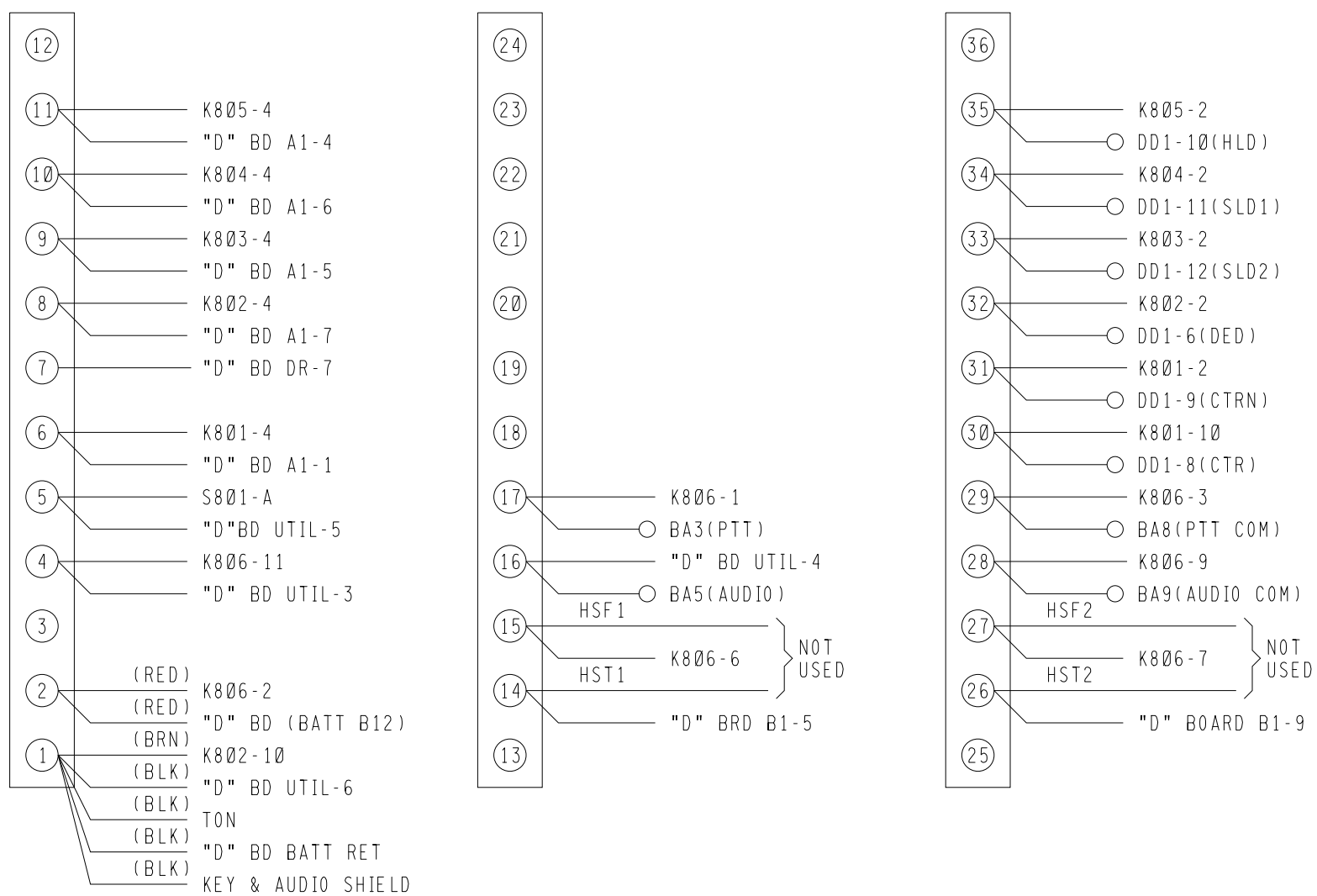
100 AMP DOUBLE POLE MAIN BREAKER			
1	15A. LIGHTS	20A. RECEPTACLE (GFCI)	2
3	15A. FAN AND THERMOSTAT	20A. 120V. RECEPTACLE (HBD)	4
5	20A. 240V. RECEPTACLE (RECT.)	15A. SURGE SUPPRESSOR	6
7	20A. 240V. RECEPTACLE (RECT.)	15A. SURGE SUPPRESSOR	8
9	120V. RECEPTACLE (MODEM)	30A. 240V. HEATER	10
11	SPARE	30A. 240V. HEATER	12



REVISIONS					
10-26-00 IRS FL1997103					
 RAIL TRANSPORT GROUP ENGINEERING COMMUNICATIONS AND SIGNALS					
VITIS TO LAKELAND STOKES, FL AC ELECTRICAL CIRCUITS DEFECT DETECTOR, MP.AR-849.70					
DESIGNED	DIGITIZED	CHECKED	DATE		
HAR/JFW	HAR/JFW	HAR/MJH	02-26-98		
DRAWING	SHEET NO	NEXT SH	NEXT FILE	NEXT SH	FILE
E-8100	436AA-5	436AA-6	AR84970	G06	AR84970
				FILE	SHEET
				AR84970	G05



DC1(RTB8)



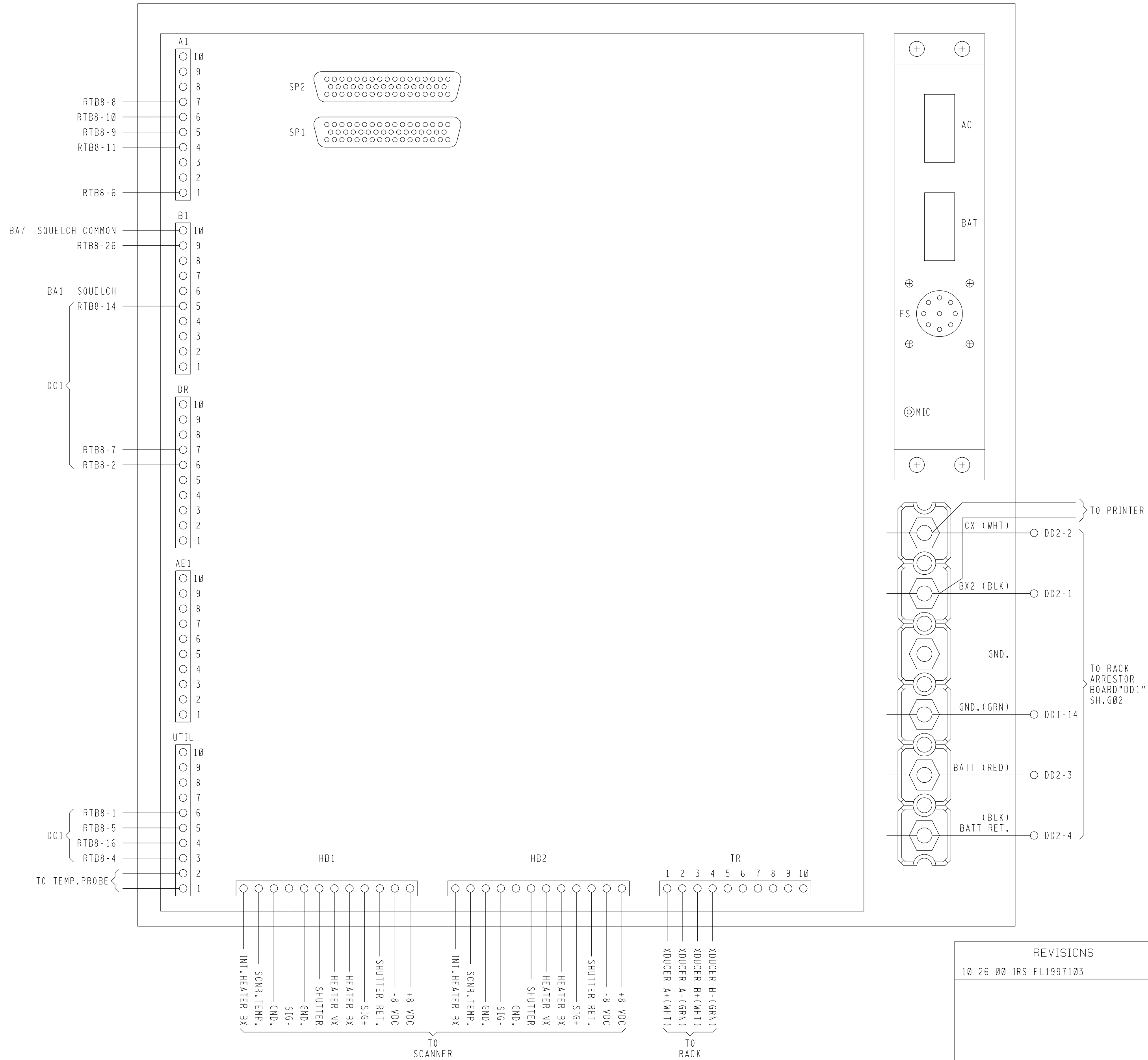
- NOTES:
1. ALL RELAYS KRP14DG
 2. CR802-806 ARE F4, CR801 IS V222A3
 3. RELAYS SHOWN IN ENERGIZED STATE

REVISIONS		 RAIL TRANSPORT GROUP ENGINEERING COMMUNICATIONS AND SIGNALS			
10-26-00 IRS FL1997103		VITIS TO LAKELAND STOKES, FL RELAY PANEL (TRACK 1) AT DEFECT DETECTOR, MP.AR-849.70			
DESIGNED HAR/JFW	DIGITIZED HAR/JFW	CHECKED HAR/MJH	DATE 02-26-98		
DRAWING E-8100	SHEET NO 436AA-6	NEXT SH 436AA-7	NEXT FILE AR84970	NEXT SH G07	FILE AR84970
					SHEET G06


"D" BOARD

"D" BOARD JUMPERS AND THERE POSITIONS

JP26	ENABLED
JP24	DISABLED
JP23	DISABLED
JP22	DISABLED
JP21	DISABLED
JP20	DISABLED
JP19	DISABLED
JP18	ENABLED
JP17	ENABLED
JP16	ENABLED
JP15	ENABLED
JP14	ENABLED
JP13	1-2
JP12	1-2
JP11	1-2
JP10	1-2
JP09	2-3
JP08	2-3
JP07	2-3
JP06	2-3
JP05	DISABLED
JP04	DISABLED
JP03	ENABLED
JP02	ENABLED
JP01	ENABLED
JPC	2-3
JPD	1-2



NOTE.
ALL EXCESS SCANNER CABLE SHOULD BE SECURED IN OVERHEAD WIRING CHASE.

REVISIONS		 RAIL TRANSPORT GROUP ENGINEERING COMMUNICATIONS AND SIGNALS			
10-26-00 IRS FL1997103		VITIS TO LAKELAND STOKES, FL "D" BOARD CONNECTIONS (TRACK 1) AT DEFECT DETECTOR, MP.AR-849.70			
DESIGNED HAR/JFW	DIGITIZED HAR/JFW	CHECKED HAR/MJH	DATE 02-26-98		
DRAWING E-8100	SHEET NO 436AA-7	NEXT SH 436AA-8	NEXT FILE AR84970	NEXT SH G08	FILE AR84970
		SHEET G07			

