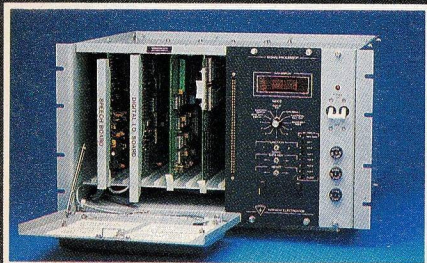
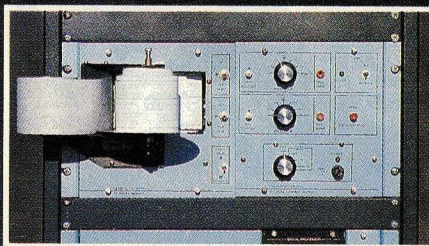


de-tec-tron-ics (di-tek-tron'-iks) n. 1. Complete train inspection stations from Harmon Industries, Inc. 2. A means for reliable train inspections.

Whatever your needs, you can count on Harmon for the most reliable Defect Detection Systems — and the most versatile features tailored to your requirements.



Electronics. The Detection System electronics are micro-processor based. This provides complete flexibility in system operation, alarm definition, data accumulation and distribution.

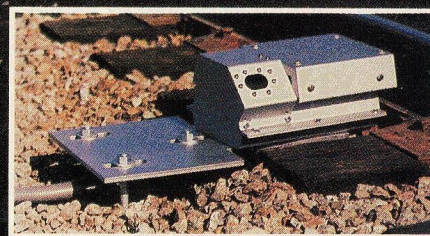
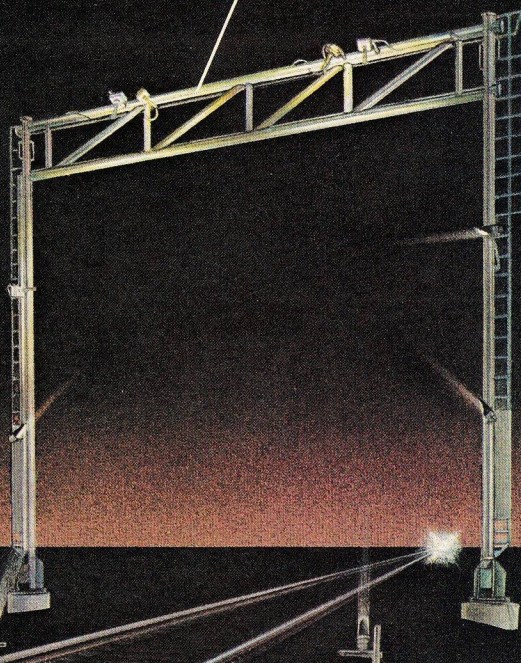


Data Logging. Harmon's Analog Chart Recorder is setting new records in user satisfaction, recording the results of Detection System analysis.

Upgrade Your Old Electronics. Add Harmon's proven reliability to your existing trackside equipment. Our Upgrade Kit offers microprocessor control technology, talker compatibility, data logging and custom designed software to fit your needs.

Dragging Equipment Detector. Our self-restoring Dragging Equipment Detector provides consistent observation of dangerous dragging equipment and completes your Defect Detection System.

High/Wide Load Detector. Harmon's High/Wide Load Detectors are units of top-quality manufacture and design. They readily interface with the Harmon Defect Detection System.



Scanner. Our Universal Scanner offers inside, outside and wheel hub scan angles. **Simply by reorientation,** our scanner is transformed into a Hot Wheel Scanner.



HARMON INDUSTRIES, INC.

P. O. Box 600 • Grain Valley, Missouri 64029

For the finest in quality, reliability and total system design and service, de-tec-tron-ics from Harmon makes the difference.

For more information — Call Tim Weeks toll-free 1-800-821-3178, or in Missouri 1-816-249-3112.

Transportation Technology Worldwide

For information circle 24

