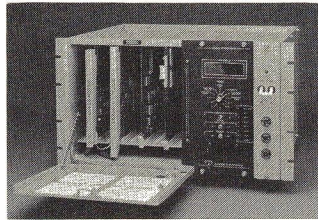


OUR TRACK RECORD SPEAKS FOR ITSELF

HOT BOX DETECTORS BY HARMON ELECTRONICS

For years Harmon has been a leading supplier of a complete line of highway crossing signal equipment, traffic control systems, railroad radio systems, high/wide load detectors, dragging equipment detectors, and train inspection stations.



Hot Box Detector Processor Talker

Harmon Electronics entered the field of hot box detectors in 1981, through the acquisition of design, patent, and manufacturing rights for the General Electric Company hot box detector system. In parallel with the marketing, manufacturing and servicing of that system we have invested in the design and development of a new microprocessor-based, state-of-the-art hot box detector, with features heretofore not available.

Customer response to these systems has been most gratifying and we appreciate the vote of confidence by railroads throughout the country.

As a supplier to the industry for more than 35 years, Harmon Electronics is dedicated to the premise that the continued growth of

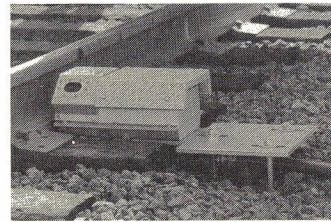
our firm is a function of how well we provide service to our valued customers. We define service as being:

(1) A continuing research and development effort to insure that our product designs keep pace with the latest technology.

(2) An equipment modernization program

to provide manufacturing facilities capable of producing hardware at least cost.

(3) A nationwide network of field service, applica-



Universal Scanner

tion engineering and account managers, to assist customers with installation and maintenance of our products as well as the training of customer maintainers and technicians.

In the hot box detector marketplace we intend to offer a viable alternative, through the marketing of a system designed to reduce acquisition, installation and maintenance costs. The incorporation of automatic integrity testing and diagnostics will enhance product reliability and ease the task of the maintainer. We invite inquiries concerning our new hot box detector, new stand-alone talker or other Harmon products. Contact the nearest Harmon sales representative.

Massapequa Park, NY (516)541-2825
 Chicago, IL (312)739-3974
 Atlanta, GA (404)964-3037
 Belmont, CA (415)593-7782
 Minneapolis, MN (612)934-4090
 Montreal (514)636-1026
 Pittsburgh, PA (412)561-5254



SAB HARMON INDUSTRIES, INC.
 Grain Valley, Mo. 64029
 816/249-3112

West Coast Operations
 415/349-2010

Write in 44 on Reader Service Card